

# SOLID TECH

## Feet

The usage of spikes is well known for increasing the sound quality extensively. However, in order to protect the floor and complete the look of the rack or loudspeaker stand, a foot is necessary. Solid Tech has a portfolio of three different floor protectors each with its different feature and design to satisfy each listeners desire.

The standard “Floor Protector” is made of anodized aluminum with a brass insert to avoid any non-desired resonance or ringing.

The “Spike Fixed Floor Protector” has the spike fixed to its body so that the rack or loudspeaker stand can be freely moved without scratching the floor. The spike can still freely move

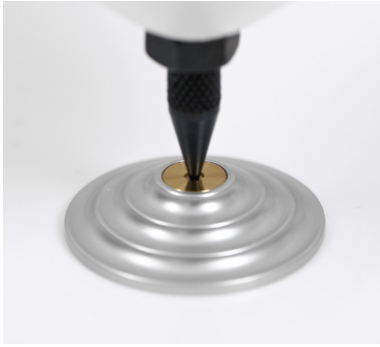
within its cover so that only the tip of the spike is the connection to the floor.

The “Feet of Concrete” have an inbuilt isolation that are designed to absorb and decouple the rack and sensitive equipment from both static electricity as well as vibrations.



# Feet

## Floor Protector



The smallest feet from Solid Tech is made out of anodized aluminum with a brass insert for the rack or loudspeaker spike. The brass insert will avoid any non-desired resonance from the floor to prolong into the rack and equipment. The design is pure and simple to suite all Solid Tech racks and loudspeaker stands.

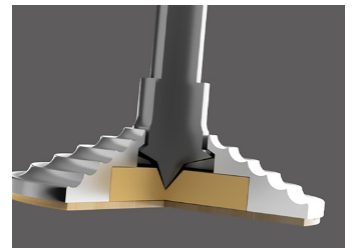


## Spike Fixed Floor Protector



Noise and vibration origin from the floor results in an audible reduction of the sound quality. Using spikes is as it increases the sound quality extensively. However standard floor protectors may scratch the floor if the rack or loudspeaker stand is accidentally moved out of place. The "Spike Fixed Floor Protector" has a stainless spike integrated and incapsulated in the aluminum cover in order to stay fixed to the floor protector if the rack is moved. Beneath the spike is located a

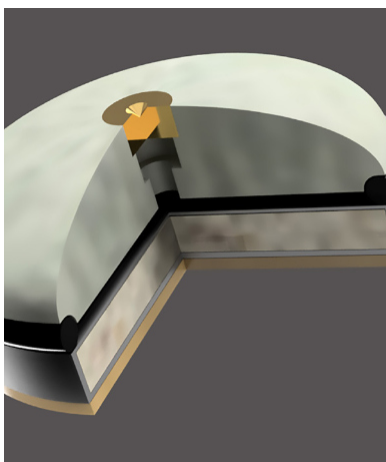
brass spacer that aim to avoid any non-desired resonance or ringing. In the bottom of the floor protector is attached a sheet of cork to damp and protect the floor from the hard metal.



## Feet of Concrete



The Inbuilt isolation is designed to absorb and decouple the rack and the very sensitive equipment from both static electricity as well as vibrations. The feet are built in 6 layers to optimize the isolation capability. The design will enhance the racks and give a sense of handcraftsmanship by being built in various materials and the concrete top gives a modern look that works nicely with all Solid Tech racks and speaker stands. Load limitation is max 50kg per foot or 200kg for 4 feet.



### Six layer construction

**Layer 1:** Brass insert where the rack spike is located to remove any non-desired resonance.

**Layer 2:** Concrete top to increase the weight and isolate from static electricity that arise from floor and carpets.

**Layer 3:** Rubber O-ring that aims to absorb vibrations and thus isolate the rack from vibrations in the floor.

**Layer 4:** Hollow aluminum spacer that can come in either black or silver

**Layer 5:** Steel sand that will absorb the low-level frequencies when transforming vibration to heat. The steel also adds weight to make the foot more stable.

**Layer 6:** Cork sheet to protect the floor from as well as absorb vibrations.

## SOLID TECH

info@solid-tech.net

www.solid-tech.net

+46(0)40 491352

Sporregatan 25, SE-21377 Malmö, Sweden

**More information and distributor list  
is available in homepage**